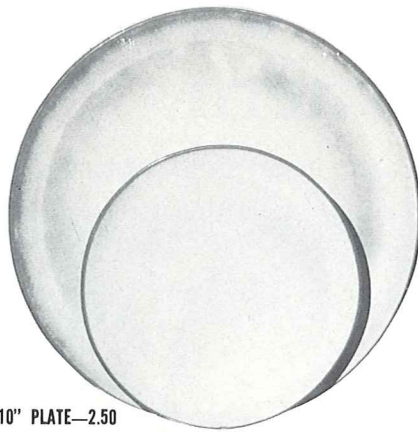


\*4K—BUTTER DISH—3.00



6F—10" PLATE—2.50

6G—7" PLATE—1.50



\*6B—SUGAR WITH LID—2.25



\*6A—9 OZ. CREAMER—1.75



\*6V—2 1/2 QT. BAKER—6.00



6C—CUP—1.35

6E—5" WELLED SAUCER—1.25



\*6H—SALT & PEPPER—2.00



\*5LC—6 OZ. JUICE—1.25

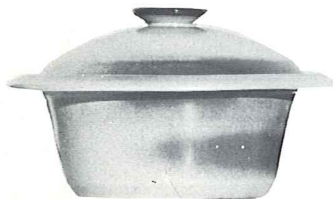
\*5L—12 OZ. TUMBLER—1.50



\*81—1 QT. PITCHER—3.00



\*80—2 QT. PITCHER—4.50



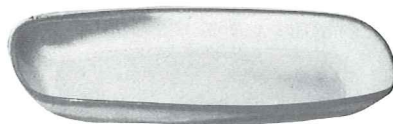
\*6VS—1 1/2 QT. BAKER—4.50



\*6T—6 CUP TEAPOT—4.00



\*6J—2 CUP TEAPOT—2.50



\*5QS—13" STEAK PLATE (SHALLOW PLATTER)—2.50

\*6P—11" STEAK PLATE—2.00

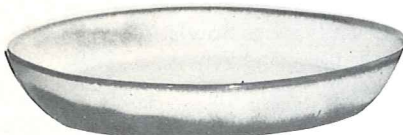
\*5PS—9" TRAY—1.50



\*6U—18 OZ. BAKER FOR TWO—3.00  
A COVERED CANDY DISH



\*6S—TWO SPOUT GRAVY—2.50



\*91—10" BAKING DISH—2.50



\*BP—6 OZ. BEAN POT  
OR CUSTARD—1.00

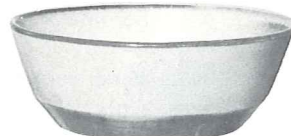


\*BP—6 OZ. BEAN POT  
OR CUSTARD/WITH LID—1.75

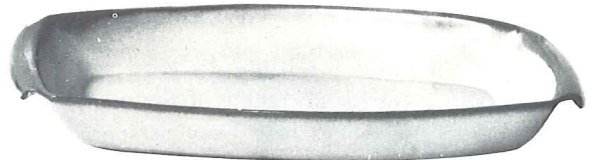


6X—14 OZ. CHILI SOUP—1.25

6XS—10 OZ. FRUIT—1.00

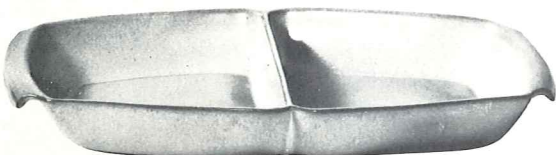


\*6N—1 QT. BOWL—2.00

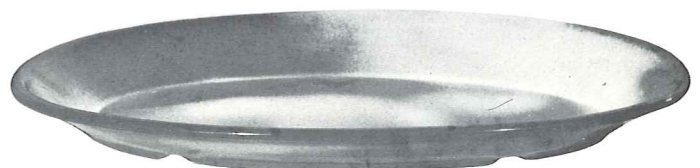


5P—17" DEEP PLATTER—8.50

5Q—13" DEEP PLATTER—3.50



\*5QD—13" DIVIDED BOWL—3.50



\*TP—17" OVAL PLATTER—8.50

THIS PAGE AVAILABLE IN PEACH GLOW, PRAIRIE GREEN, WOODLAND MOSS AND WHITE SAND EXCEPT WHERE NOTED \*  
\* AVAILABLE IN ALL COLORS—ADD 50% FOR FLAME

SIZES ARE APPROXIMATE AND MAY VARY SLIGHTLY.